

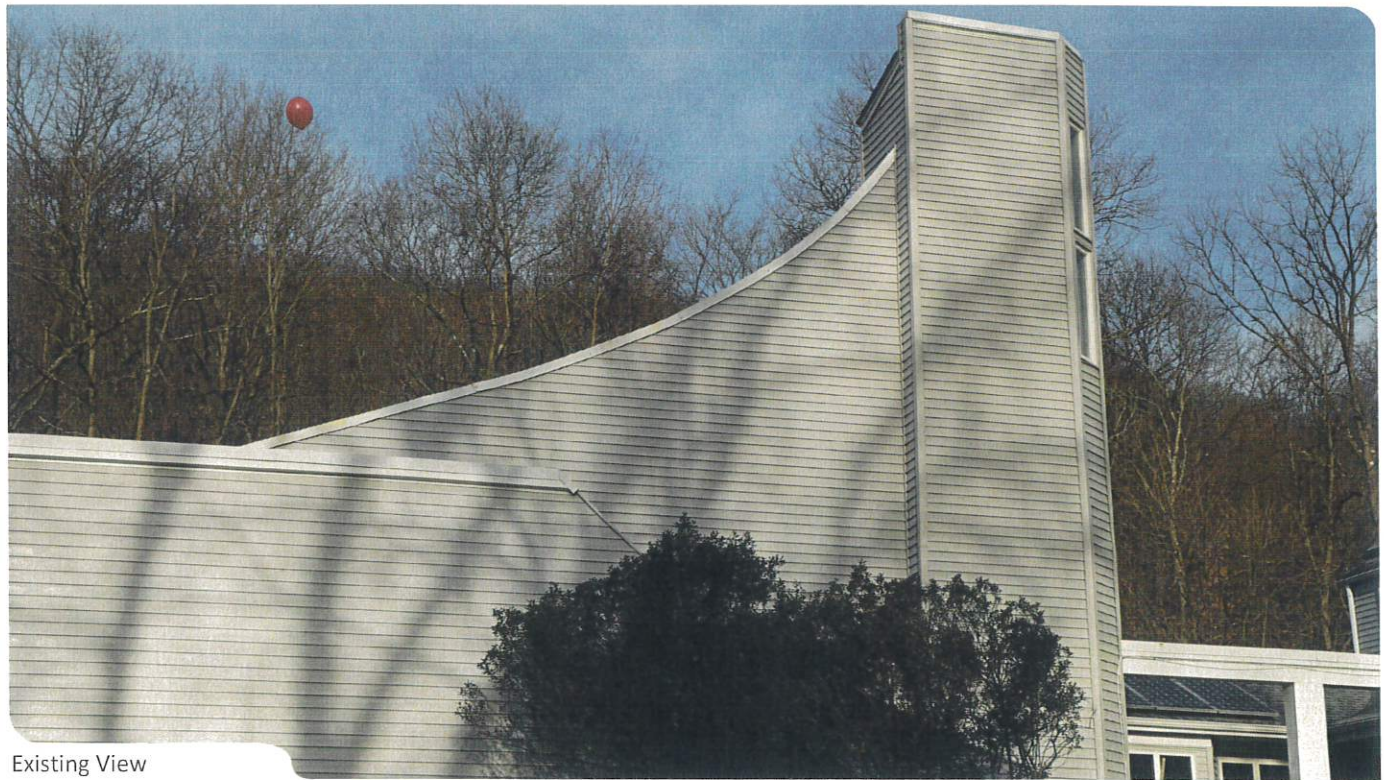
## APPENDIX B

### Photo Log



Existing View

Photo	Location	Municipality	Distance to Tower	Balloon Visible
01	South corner of the Montebello Community Center and Justice Court parking area (Host property)	Montebello (V)	270 ft	FILTERED



Existing View

Photo	Location	Municipality	Distance to Tower	Balloon Visible
02	Entrance road to the Montebello Community Center parking area	Montebello (V)	270 feet	YES

## PHOTO LOG

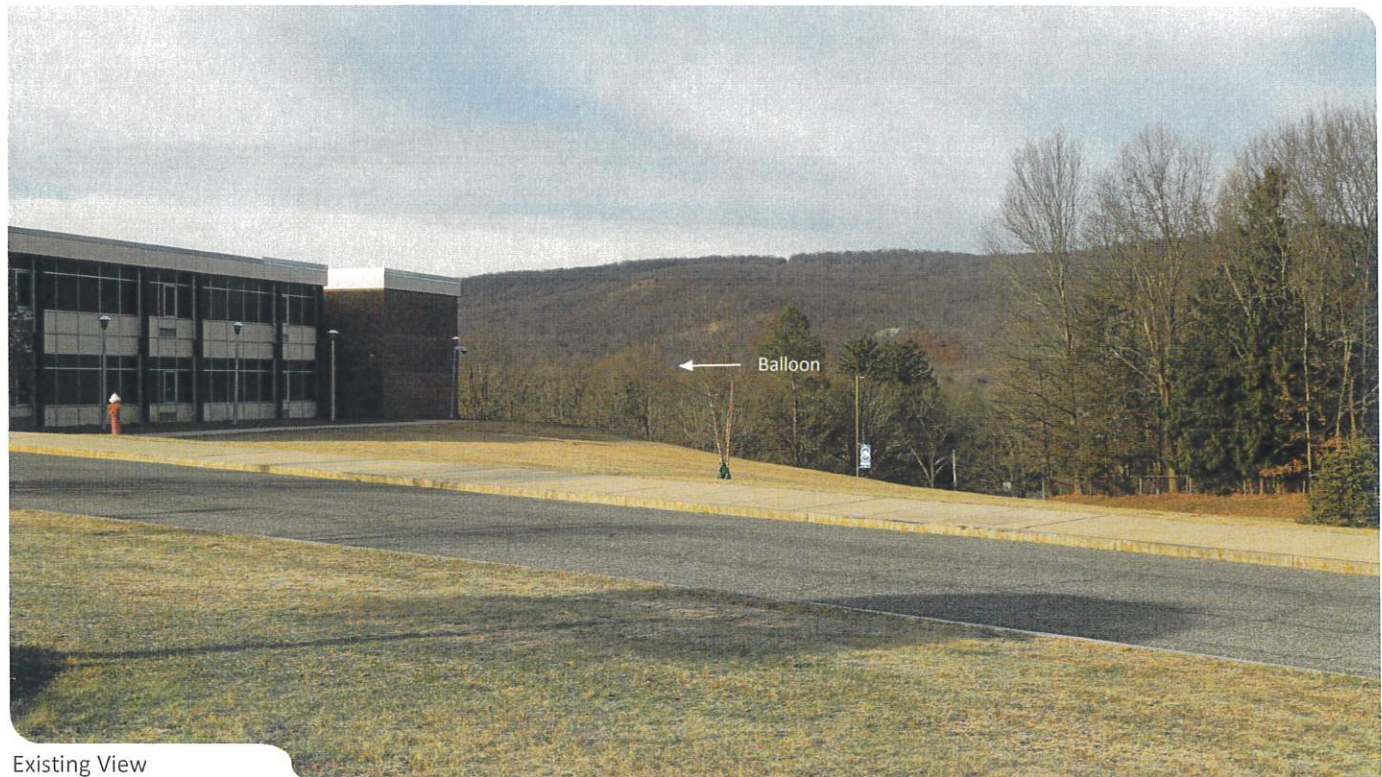
Figure B1





Existing View

Photo	Location	Municipality	Distance to Tower	Balloon Visible
03	Haverstraw Rd at entrance to the Montebello Community Center and Justice Center (Adjacent to host property)	Montebello (V)	400 feet	YES



Existing View

Photo	Location	Municipality	Distance to Tower	Balloon Visible
04	Entrance walkway to Suffern High School	Montebello (V)	6,040 feet	FILTERED

## PHOTO LOG

Figure B2





Existing View

Photo	Location	Municipality	Distance to Tower	Balloon Visible
05	Western entrance to Suffern High School	Montebello (V)	5,640 feet	YES



Existing View

Photo	Location	Municipality	Distance to Tower	Balloon Visible
06	Sousa Ln, 90 feet north of Grist Mill Ct	Montebello (V)	5,120 feet	NO

## PHOTO LOG

Figure B3





Existing View

Photo	Location	Municipality	Distance to Tower	Balloon Visible
07	Babbling Brook Ln, 310 feet west of Copeland Dr	Montebello (V)	3,220 feet	NO



Existing View

Photo	Location	Municipality	Distance to Tower	Balloon Visible
08	Backyard of adjacent property (340 Haverstraw Rd)	Montebello (V)	300 feet	FILTERED

## PHOTO LOG

Figure B4





Existing View

Photo	Location	Municipality	Distance to Tower	Balloon Visible
09	Intersection of Harverstraw and Westgate Rds	Montebello (V)	1,710 feet	NO



Existing View

Photo	Location	Municipality	Distance to Tower	Balloon Visible
10	Near 19 Bayard Ln S	Montebello (V)	1,690 feet	NO

## PHOTO LOG

Figure B5





Existing View

Photo	Location	Municipality	Distance to Tower	Balloon Visible
11	Regis Ct, cul-de-sac	Montebello (V)	660 feet	YES



Existing View

Photo	Location	Municipality	Distance to Tower	Balloon Visible
12	Haverstraw Rd at Regis Ct, south	Montebello (V)	1,050 feet	NO

## PHOTO LOG

Figure B6





Existing View

Photo	Location	Municipality	Distance to Tower	Balloon Visible
13	Haverstraw Rd at Regis Ct, north	Montebello (V)	1,140 feet	YES



Existing View

Photo	Location	Municipality	Distance to Tower	Balloon Visible
14	Zeck Ct, 210 feet east of Henry Ct	Montebello (V)	1,280 feet	YES

PHOTO LOG

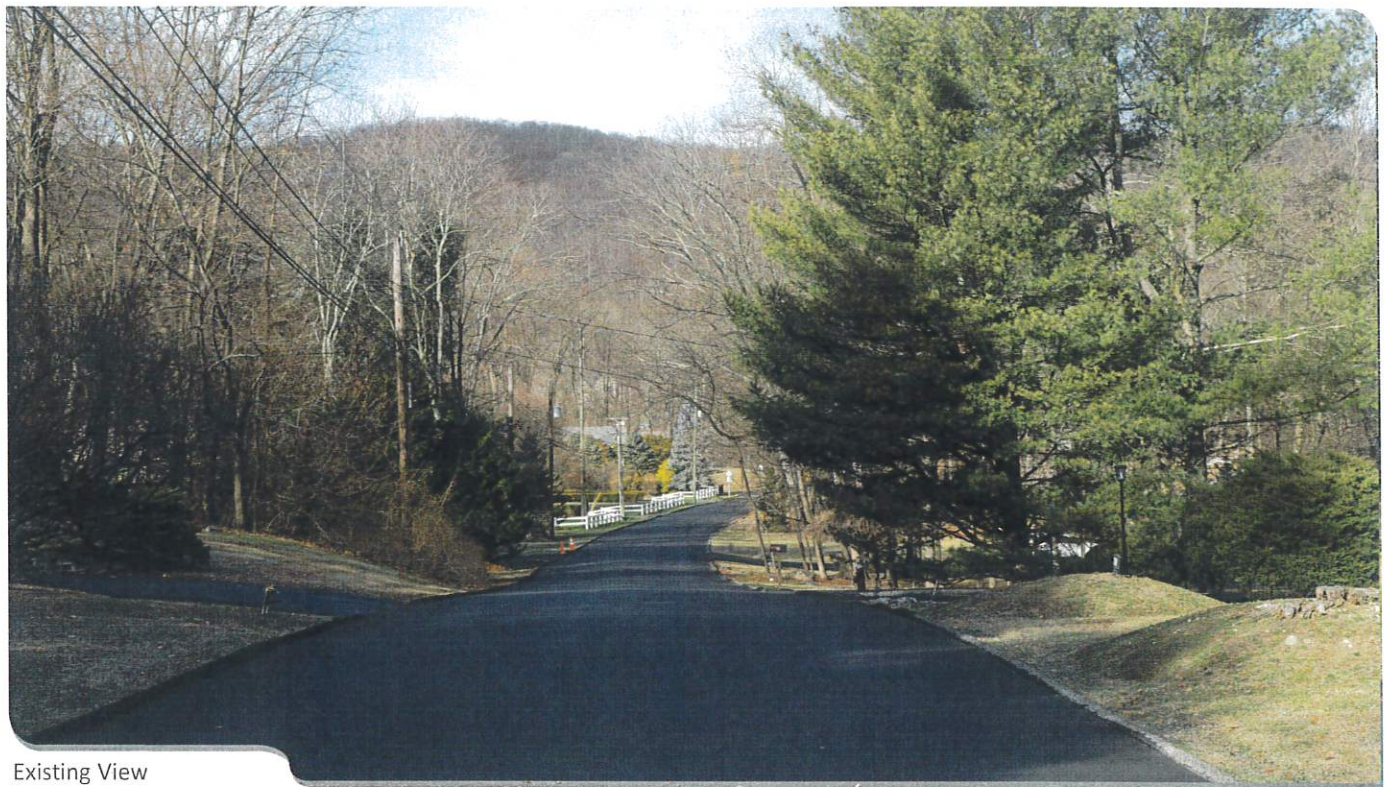
Figure B7





Existing View

Photo	Location	Municipality	Distance to Tower	Balloon Visible
15	E Mayer Dr, 400 feet west of Mile Rd	Montebello (V)	4,820 feet	NO



Existing View

Photo	Location	Municipality	Distance to Tower	Balloon Visible
16	Near 48 Mayer Dr	Montebello (V)	2,070 feet	NO

## PHOTO LOG

Figure B8





Existing View

Photo	Location	Municipality	Distance to Tower	Balloon Visible
17	River Rd at Rocklyn Dr	Montebello (V)	3,110 feet	NO



Existing View

Photo	Location	Municipality	Distance to Tower	Balloon Visible
18	River Rd, 220 feet north of Rocklyn Dr	Montebello (V)	2,750 feet	NO

## PHOTO LOG

Figure B9





Existing View

Photo	Location	Municipality	Distance to Tower	Balloon Visible
19	Town of Ramapo Senior Center parking area, Mayer Dr	Montebello (V)	640 feet	FILTERED



Existing View

Photo	Location	Municipality	Distance to Tower	Balloon Visible
20	Haverstraw Rd, 310 feet north of Village boundary	Montebello (V)	4,010 feet	NO

## PHOTO LOG

Figure B10





Existing View

Photo	Location	Municipality	Distance to Tower	Balloon Visible
21	Haverstraw Rd, 400 feet south of Mayer Dr	Montebello (V)	800 feet	NO



Existing View

Photo	Location	Municipality	Distance to Tower	Balloon Visible
22	Kakiat Park, Mountain Trail photo location/scenic overlook	Ramapo (T)	6,300 ft	NO

## PHOTO LOG

Figure B11





Existing View

Photo	Location	Municipality	Distance to Tower	Visibility
23	Mountain Trail, Harriman State Park	Ramapo	1.3 Miles	NO



Existing View

Photo	Location	Municipality	Distance to Tower	Visibility
24	Suffern - Bear Mountain Trail, Harriman State Park	Ramapo	1.6 Miles	NO

## PHOTO LOG

Figure B12





Existing View

Photo	Location	Municipality	Distance to Tower	Visibility
25	Suffern - Bear Mountain Trail, Harriman State Park	Ramapo	1.6 Miles	NO

Existing View

Photo	Location	Municipality	Distance to Tower	Visibility
-------	----------	--------------	-------------------	------------

PHOTO LOG

Figure B13